

Press release

Dornbirn, April 2012

Architecture, perfectly lit

Zumtobel sets building façades centre stage

No other company understands the demands placed on today's façade lighting as well as Zumtobel does. The company not only concentrates on unique, versatile lighting solutions that use innovative technology to meet every conceivable requirement, it is also heavily committed to the environment and sustainability.

Special luminaires and lighting control systems for façade lighting are at the heart of Zumtobel's *façades and architecture* application area. It squares architecturally inspiring lighting concepts with maximum energy efficiency. Zumtobel offers a product portfolio that uses intelligent lighting control systems to meet demanding lighting tasks without overlooking the need for centre-stage settings and efficiency. This includes precise illumination of building details, uniform façade lighting, and lighting shows that project media content across extensive areas. The use of modern high-output LEDs cuts energy consumption significantly and reconciles the demands of cultural considerations with the imperative to use the Earth's natural resources responsibly.

Light that shapes architecture

Light is used to set museums, high-rise buildings and shopping malls centre stage, pick out details or emphasise the size of a building. Zumtobel aspires to deliver tailor-made solutions and the best lighting for people and the environment; the company has already illuminated the biggest media façade in the world as well as the Harpa Concert Hall in Reykjavik and the Rookery Building in Chicago. The example of the Galleria Centercity shopping mall in Cheonan in South Korea demonstrates how façade luminaires can be integrated naturally into the façade of a building and turned into a communication medium by lively centre-stage settings. A total of 22,000 LEDs wrap the structure in a shimmering skin that provides dynamic, flowing light sequences. Zumtobel implemented this unique lighting installation jointly with Bonn lighting design firm a.gLicht and Amsterdam architecture firm UNStudio.

Wide variety of façade lighting products

With a total of six advanced LED façade spotlights, Zumtobel is presenting a product portfolio that perfectly meets complex architectural, lighting design and sustainability requirements at Light+Building 2012. Compatibility between luminaire and lighting management system is a vital prerequisite for adjusting and controlling façade luminaires. Zumtobel's Luxmate lighting management system is the ideal solution for small as well as highly complex building services control systems.

The Aphrodite LED luminaire uses light, colour and movement to create fascinating sceneries. Inspired by the lighting spectacles seen in nature, seven predefined lighting scenes and a specially developed LED module with a stepper motor-controlled glass cylinder project a never-ending succession of constantly changing light patterns. These consist of functional white light with different colour temperatures and emotive coloured light thanks to red, blue and amber coloured LEDs.

The Pylas LED floodlight also produces coloured light. It is one of the most versatile floodlights available on the market, boasting power ratings from 1.2 to 52.5 W, narrow-beam and wide-angle patterns as well as various light colours and RGB models. Zumtobel's extensive Pylas product range, which includes four design sizes in an identical design, is the ideal solution for illuminating façades from various distances and for highlighting details.

The cube-shaped Skena special effect wall-mounted LED luminaire produces elegant effects of a completely different kind. It illuminates façades with extraordinary and geometrical lighting patterns. The product range includes three models with domed lenses or flat panels that emit the light directed via a conical reflector with beam patterns from 2° to 66°. Elegant vertical or horizontal light beams create delicate and large-area effects. With a colour temperature of 6000 K, Skena's optical system ensures excellent illuminance at low power consumption of only 10 W.

With a diameter of just 52 mm, Pan is the smallest commercially available spotlight for façade lighting. This rugged spotlight can be fitted flexibly in a downlight or upright position to highlight architectural details, which makes it an expert for illuminating windows and cornices. A high-output LED and a minimum power requirement of just 1.25 W make Pan a sustainable alternative to conventional floodlights with high lumen output levels.

The Ikono range of wall-mounted LED luminaires with directional white or RGB colour-changing cones of light lend structure to building façades. On the outside, the only difference between the downlights and down/uplights, which are available in three design sizes, are the dimensions of their square light aperture: 90 mm, 130 mm or 180 mm. Depending on size and the lighting task in question, the most efficient LED technology in each case is used inside and teamed with spot or flood optics. The Ikono wall-mounted luminaire casts impressive shafts of light in warm or cool white colour temperatures over short or long distances to match the façade material.

The Elevo façade luminaire is a very new addition to the product portfolio; when placed on window parapets it is invisible to passers-by and illuminates projecting features and surfaces impressively. Elevo uses warm or cool white colour temperatures to bring both historical and contemporary façades to life. The luminaire is switchable or PWM-dimmable, and can be easily integrated into a variety of system environments. As a compact, high-output LED luminaire, ELEVO is ideal for both direct and indirect lighting. The luminaire with IP66 protection boasts an intelligent temperature guard for maximum resistance. Thanks to precise light distribution, this energy-efficient façade luminaire causes minimum light pollution.

Zumtobel. The Light.

Brief profile

Zumtobel is a leading international supplier of integral lighting solutions that enable people to experience the interplay of light and architecture. As a leader in innovation, the luminaire manufacturer provides a comprehensive range of high-quality luminaires and lighting management systems for the most varied application areas of professional interior lighting – including offices and educational facilities, presentation and retail, hotels and wellness, health and care, art and culture as well as industry and engineering. Zumtobel is a brand of the Zumtobel group with its head office in Dornbirn, Vorarlberg (Austria).

For more information, please contact:



Zumtobel Lighting GmbH
NikolausJohannson
Head of Brand Communication
Schweizer Strasse 30
A-6850 Dornbirn

Tel. +43-5572-390-26427
Fax. +43-5572-390-926427
nikolaus.johannson@zumtobel.com
www.zumtobel.com

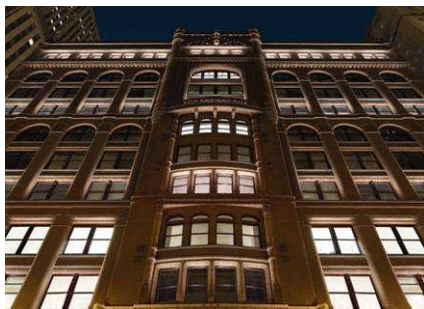


Zumtobel Lighting GmbH
Nadja Frank
PR Manager
Schweizer Strasse 30
A-6850 Dornbirn

Tel. +43-5572-390-1303
Fax. +43-5572-390-91303
nadja.frank@zumtobel.com
www.zumtobel.com

Captions:

Credits: Zumtobel



Caption 1: The Rookery Building in Chicago: A specially manufactured custom LED luminaire was developed by the lighting designers in collaboration with Zumtobel in order to achieve soft, but nevertheless precise, lighting.



Caption 2: The Pan recessed LED luminaire with IP66 protection is especially tough and durable thanks to dual-layer powder coating.



Caption 3: Harpa Concert Hall in Reykjavik: for the façade, the architect Olafur Elíasson developed, in collaboration with Zumtobel, a completely new type of luminaire which, thanks to its design and colour, can be integrated nearly invisibly into the prismatic structure.



Caption 4: The Aphrodite LED spotlight, created in cooperation with designer Nik Schweiger, combines light, colour and movement in a fascinating manner.



Caption 5: Featuring superior LED technology and efficiency of more than 60 lm/W, the Pylas LED floodlight is a pioneer in contemporary façade lighting.



Caption 6: The Skena LED luminaire allows you to set façades centre stage with extravagant lighting patterns and geometric compositions.



Caption 7: Galleria Centercity shopping mall in Cheonan, South Korea: Zumtobel's RGB LED spotlights and white LED spotlights combine light, colour and movement in a fascinating way. The installed DMX control system allows each LED spot to be programmed individually.



Caption 8: The high-output Ikono wall-mounted LED luminaire with IP65 protection features focussed light distribution with a wealth of different effects and design patterns.



Caption 9: Elevo is the most recent addition to Zumtobel's product range for façade lighting. It is invisible when placed on window parapets, and is ideal for both direct and indirect façade lighting.